

\$729,000 - 29 Beachside Crescent, Rural Wetaskiwin County

MLS® #E4432033

\$729,000

3 Bedroom, 2.00 Bathroom, 1,819 sqft

Rural on 0.51 Acres

Beachside Estate, Rural Wetaskiwin County, AB

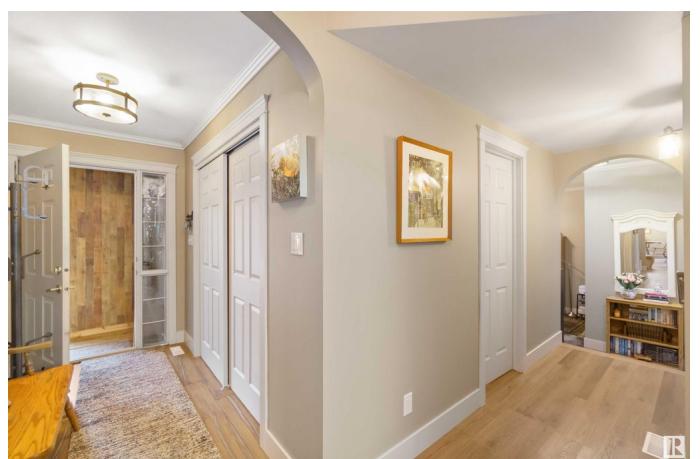
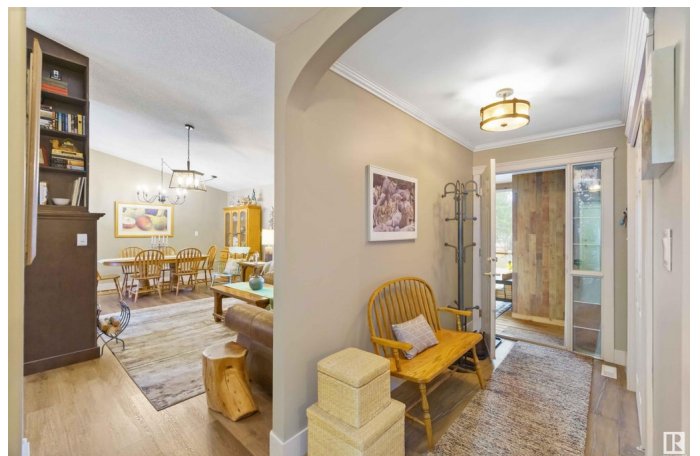
Welcome to your oasis at the lake! Step into over 2,200 sqft of beautifully designed living space with exceptional craftsmanship at the forefront. This stunning home features a grand front entrance with an oversized closet. The open floor plan seamlessly connects a sleek kitchen with ample cupboard space and a walk-in pantry to the dining room, breakfast nook, and living room, all anchored by a cozy two-sided gas fireplace. The all-seasons screened-in porch offers year-round relaxation, while the breathtaking outdoor space is perfect for entertaining. Retreat to the luxurious primary spa suite with double vanities and a tiled shower for the ultimate in comfort. A rare find, the 1100sqft triple garage includes a full working shop—ideal for hobbies, projects, or additional storage. Outbuildings include a 12x24 quonset & multiple sheds. Access to the lake is a mere steps away. Don't miss this exceptional property that blends elegance, space, and functionality in every detail!

Built in 2000

Essential Information

MLS® # E4432033

Price \$729,000



Bedrooms	3
Bathrooms	2.00
Full Baths	2
Square Footage	1,819
Acres	0.51
Year Built	2000
Type	Rural
Sub-Type	Detached Single Family
Style	Bungalow
Status	Active

Community Information

Address	29 Beachside Crescent
Area	Rural Wetaskiwin County
Subdivision	Beachside Estate
City	Rural Wetaskiwin County
County	ALBERTA
Province	AB
Postal Code	T0C 2V0

Amenities

Features	See Remarks
----------	-------------

Interior

Interior Features	ensuite bathroom
Heating	Forced Air-1, Natural Gas
Stories	1
Has Basement	Yes
Basement	See Remarks

Exterior

Exterior	Wood
Exterior Features	Lake Access Property, Lake View
Construction	Wood
Foundation	Concrete Perimeter

Additional Information

Date Listed	April 22nd, 2025
Days on Market	2

Zoning

Zone 95

DATA IS DEEMED RELIABLE BUT IS NOT GUARANTEED ACCURATE BY THE REALTORS® ASSOCIATION OF EDMONTON. COPYRIGHT 2025 BY THE REALTORS® ASSOCIATION OF EDMONTON. ALL RIGHTS RESERVED. Trademarks are owned or controlled by the Canadian Real Estate Association (CREA) and identify real estate professionals who are members of CREA (REALTOR®, REALTORS®) and/or the quality of services they provide (MLS®, Multiple Listing Service®)

Listing information last updated on April 24th, 2025 at 4:47am MDT